



Lexington Hearing & Speech Center



Our Mission

Lexington Hearing & Speech Center teaches children with hearing, speech and language impairments to listen and talk by providing them with high quality educational, therapeutic, and family support services.



Our Educational and Clinical Goals

Our educational goal is for all children to enter kindergarten or first grade with age appropriate communication skills. Our staff strives to ensure that LHSC clients have the necessary language and independence to become active participants in their families and communities. At LHSC we know that by learning to communicate orally, children have the whole world of communication open to them. Therefore, our audiologists, teachers, speech pathologists and support staff work together to create a safe and welcoming environment with an emphasis on oral and verbal communication.

What does this mean for your child?

Focusing on the whole child, the professionals at LHSC provide stimulating environments that build on each child's unique strengths and needs. We believe that early identification and intervention will give every child the opportunity they deserve to learn to listen and talk. Thereby, allowing every child to develop their individual communication capabilities to the greatest extent possible.



LHSC Clinical Programming

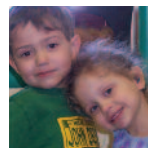
LHSC's clinic staff are highly educated in the application of Listening & Spoken Language therapies and committed to the understanding that these communication skills are the foundation necessary for future learning. In our clinic, we offer small group settings, use of specialized audiological equipment, and individualized programming all designed to ensure that our clients will have the opportunity to learn to *listen and talk*.

Hearing Services

- Hearing Evaluations
- Aural (Re)Habilitation
 - Hearing Aids
 - Cochlear Implant Assessment
 - Cochlear Implant Programming
 - Parent Education & Support
 - Listening Technology
- Early Intervention Collaboration

Speech/Language Services

- Speech/Language Evaluations
- Aural (Re) Habilitation
 - Listening & Spoken Language Therapies
 - Parent Education & Support
- Speech/Language Therapy
- Early Intervention Collaboration
- Early intervention Small Group Therapy



LHSC Educational Programming

At LHSC, language enriched classroom activities, Individualized Educational Plans, and parental involvement all come together to provide a positive and productive learning experience. Our program is a state licensed and state approved preschool vendor, which offers programming for hearing impaired, speech/language delayed and community children, ages 3-5 years. LHSC is a Three Star Child Care Facility as awarded by the Kentucky For Kids Now STARS Rating Program.

Preschool and Kindergarten Program

- Small Class Sizes (typical ratio is 5 to 1)
- Language Based Curriculum
- IEPs – Meeting each child where they are educationally & developmentally
- Parent Support
- On-site audiological services
- Classroom amplification equipment

Day School Program

Lexington Hearing & Speech Center also provides a safe and appropriate early childhood environment in a state approved and Three STARS rated child care facility. Our day school, which operates year round, serves infant through age three using the same collaborative approach as the clinic and preschool. Children with hearing impairments and speech/language delays are the primary focus of LHSC Day School Curriculum but we welcome all children knowing that everyone will benefit from the diversity of a combined inclusive class setting.



History of the Center

The Lexington Hearing & Speech Center was founded in 1960 when a small group of parents from the Lexington area approached Mr. and Mrs. Frankel to ask for their assistance in establishing a program to teach speech skills to their children with hearing impairments. This was the beginning of the Lexington Deaf Oral School, later to become the Lexington Hearing & Speech Center.

Mr. Frankel, an architect and engineer who had been deaf since birth, and Mrs. Frankel, who was also hearing impaired, dedicated their lives to active community participation for the hearing impaired.

Over the years and because of the dedication and passion of family, friends and the Frankels, Lexington Hearing & Speech Center has grown to accommodate the needs of our students and their families. LHSC's little campus now houses the original preschool and kindergarten program, a full service audiological and speech/language clinic and a full time day school program.

Now fifty years since its founding, Lexington Hearing & Speech Center looks forward to a future of continued dedication to excellence, as we follow the examples of our founders, Edie and Jimmy Frankel.



Lexington Hearing & Speech Center

162 N. Ashland Ave. • Lexington, KY 40502

859.268.4545 • www.lhscopy.org